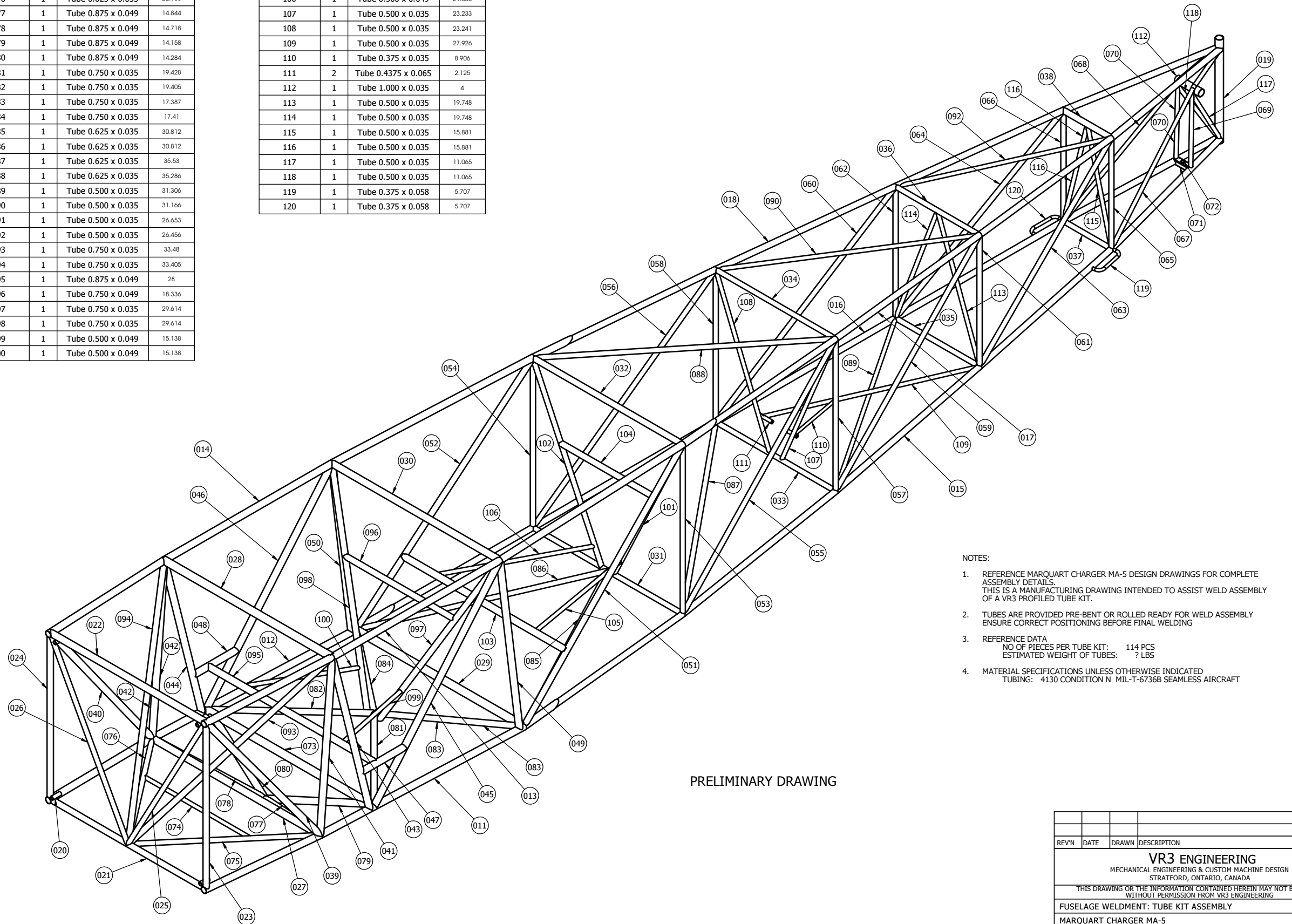


PARTNUMBER	QTY.	Description	Length
011	1	Tube 0.875 x 0.035	58.542
012	1	Tube 0.875 x 0.035	58.542
013	1	Tube 0.875 x 0.035	86.518
014	1	Tube 0.875 x 0.035	86.518
015	1	Tube 0.750 x 0.035	129.575
016	1	Tube 0.750 x 0.035	129.575
017	1	Tube 0.750 x 0.035	100.816
018	1	Tube 0.750 x 0.035	100.816
019	1	Tube 1.000 x 0.049	15
020	4	Tube 0.500 x 0.065	1.375
021	1	Tube 0.750 x 0.035	25.549
022	1	Tube 0.875 x 0.035	26.006
023	1	Tube 0.750 x 0.035	23.549
024	1	Tube 0.750 x 0.035	23.549
025	1	Tube 0.625 x 0.035	26.909
026	1	Tube 0.625 x 0.035	26.909
027	1	Tube 0.875 x 0.035	28
028	1	Tube 1.000 x 0.049	28
029	1	Tube 1.000 x 0.049	28
030	1	Tube 0.875 x 0.035	28
031	1	Tube 0.625 x 0.035	24.585
032	1	Tube 0.750 x 0.035	24.549
033	1	Tube 0.625 x 0.035	19.585
034	1	Tube 0.625 x 0.035	19.585
035	1	Tube 0.625 x 0.035	13.585
036	1	Tube 0.625 x 0.035	13.585
037	1	Tube 0.625 x 0.035	7.585
038	1	Tube 0.750 x 0.049	8
039	1	Tube 0.875 x 0.035	30.573
040	1	Tube 0.875 x 0.035	30.536
041	1	Tube 0.875 x 0.035	24.773
042	1	Tube 0.875 x 0.035	24.773
043	1	Tube 0.875 x 0.035	25.779
044	1	Tube 0.875 x 0.035	25.779
045	1	Tube 0.875 x 0.035	32.679
046	1	Tube 0.875 x 0.035	32.679
047	1	Tube 0.875 x 0.035	7.316
048	1	Tube 0.875 x 0.035	7.316
049	1	Tube 0.875 x 0.035	26.174
050	1	Tube 0.875 x 0.035	26.174
051	1	Tube 0.750 x 0.035	37.787
052	1	Tube 0.750 x 0.035	37.787
053	1	Tube 0.625 x 0.035	23.987
054	1	Tube 0.625 x 0.035	23.987
055	1	Tube 0.625 x 0.035	36.81
056	1	Tube 0.625 x 0.035	36.81
057	1	Tube 0.625 x 0.035	21.585
058	1	Tube 0.625 x 0.035	21.585
059	1	Tube 0.625 x 0.035	34.466
060	1	Tube 0.625 x 0.035	34.466
061	1	Tube 0.625 x 0.035	18.585
062	1	Tube 0.625 x 0.035	18.585
063	1	Tube 0.625 x 0.035	31.042
064	1	Tube 0.625 x 0.035	31.042
065	1	Tube 0.625 x 0.035	15.585
066	1	Tube 0.625 x 0.035	15.585
067	1	Tube 0.500 x 0.035	26.832
068	1	Tube 0.500 x 0.035	26.832
069	1	Tube 0.500 x 0.035	10.907
070	1	Tube 0.500 x 0.035	10.907

PARTNUMBER	QTY.	Description	Length
071	1	Tube 0.750 x 0.750 x 0.049	2.455
072	1	Tube 0.500 x 0.065	1
073	1	Tube 1.000 x 0.049	28
074	1	Tube 0.500 x 0.035	17.521
075	1	Tube 0.625 x 0.035	22.155
076	1	Tube 0.625 x 0.035	22.155
077	1	Tube 0.875 x 0.049	14.844
078	1	Tube 0.875 x 0.049	14.718
079	1	Tube 0.875 x 0.049	14.158
080	1	Tube 0.875 x 0.049	14.284
081	1	Tube 0.750 x 0.035	19.428
082	1	Tube 0.750 x 0.035	19.405
083	1	Tube 0.750 x 0.035	17.387
084	1	Tube 0.750 x 0.035	17.41
085	1	Tube 0.625 x 0.035	30.812
086	1	Tube 0.625 x 0.035	30.812
087	1	Tube 0.625 x 0.035	35.53
088	1	Tube 0.625 x 0.035	35.286
089	1	Tube 0.500 x 0.035	31.306
090	1	Tube 0.500 x 0.035	31.166
091	1	Tube 0.500 x 0.035	26.653
092	1	Tube 0.500 x 0.035	26.456
093	1	Tube 0.750 x 0.035	33.48
094	1	Tube 0.750 x 0.035	33.405
095	1	Tube 0.875 x 0.049	28
096	1	Tube 0.750 x 0.049	18.336
097	1	Tube 0.750 x 0.035	29.614
098	1	Tube 0.750 x 0.035	29.614
099	1	Tube 0.500 x 0.049	15.138
100	1	Tube 0.500 x 0.049	15.138

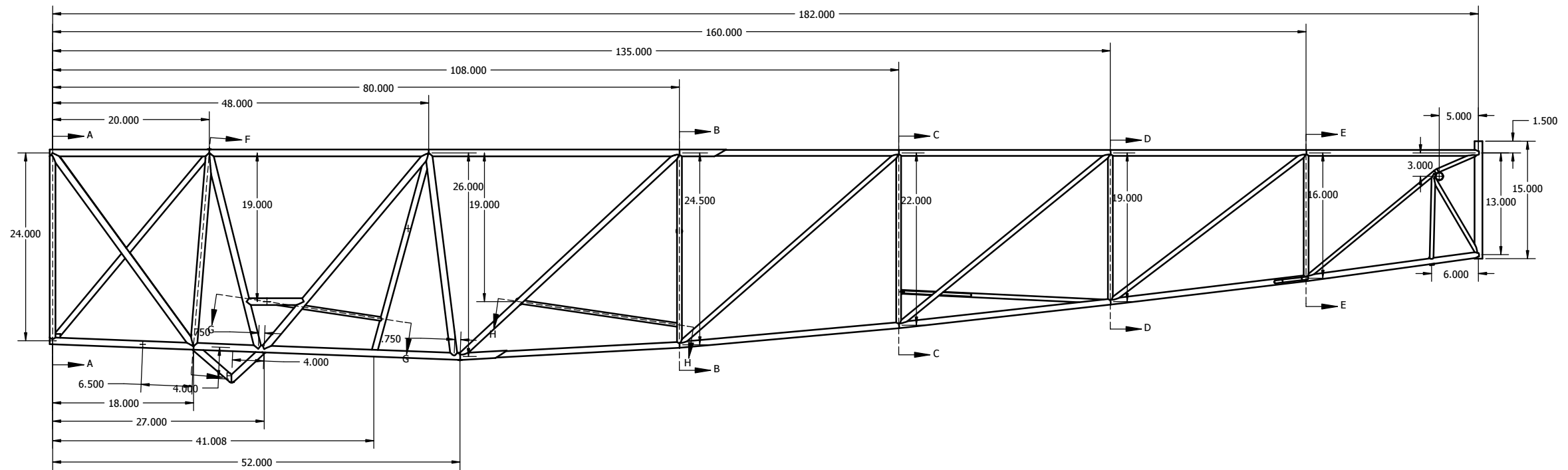
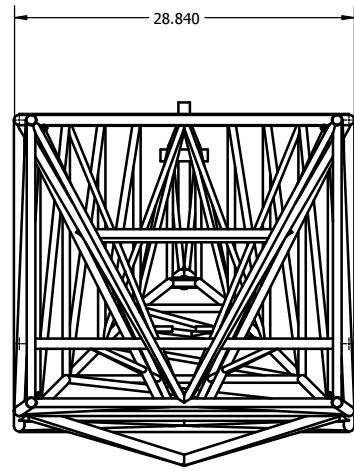
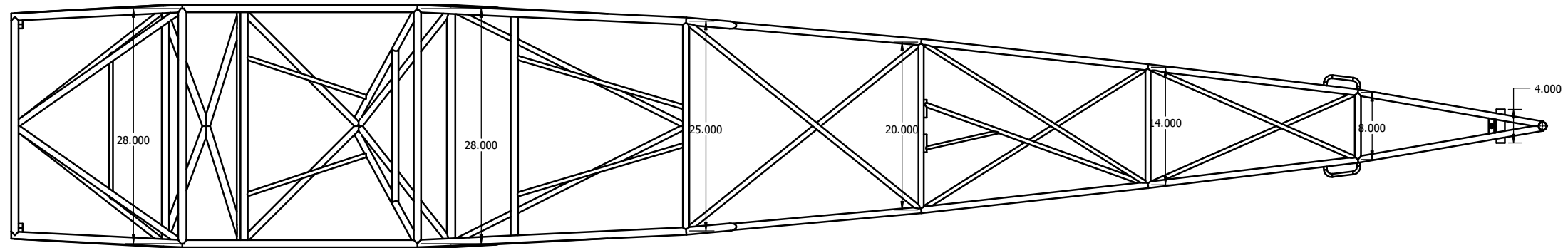
PARTNUMBER	QTY.	Description	Length
101	1	Tube 0.625 x 0.035	26.655
102	1	Tube 0.625 x 0.035	26.655
103	1	Tube 0.875 x 0.049	27.192
104	1	Tube 0.750 x 0.049	15.612
105	1	Tube 0.500 x 0.049	21.008
106	1	Tube 0.500 x 0.049	21.008
107	1	Tube 0.500 x 0.035	23.233
108	1	Tube 0.500 x 0.035	23.241
109	1	Tube 0.500 x 0.035	27.926
110	1	Tube 0.375 x 0.035	8.906
111	2	Tube 0.4375 x 0.065	2.125
112	1	Tube 1.000 x 0.035	4
113	1	Tube 0.500 x 0.035	19.748
114	1	Tube 0.500 x 0.035	19.748
115	1	Tube 0.500 x 0.035	15.881
116	1	Tube 0.500 x 0.035	15.881
117	1	Tube 0.500 x 0.035	11.065
118	1	Tube 0.500 x 0.035	11.065
119	1	Tube 0.375 x 0.058	5.707
120	1	Tube 0.375 x 0.058	5.707



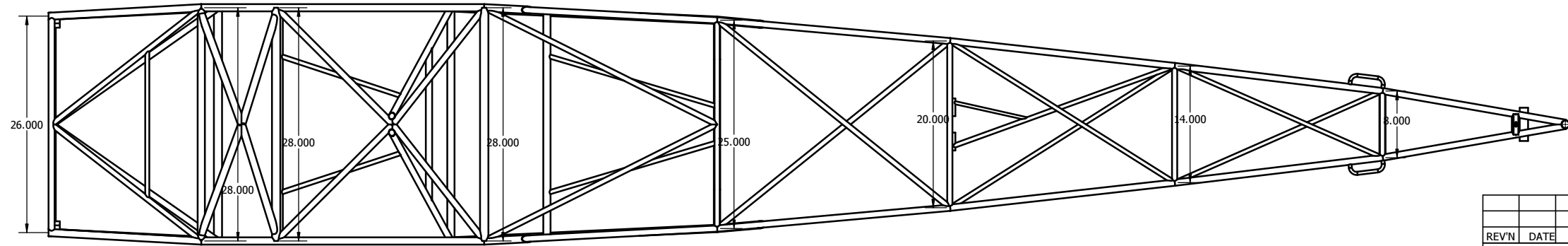
- NOTES:
- REFERENCE MARQUART CHARGER MA-5 DESIGN DRAWINGS FOR COMPLETE ASSEMBLY DETAILS. THIS IS A MANUFACTURING DRAWING INTENDED TO ASSIST WELD ASSEMBLY OF A VR3 PROFILED TUBE KIT.
 - TUBES ARE PROVIDED PRE-BENT OR ROLLED READY FOR WELD ASSEMBLY ENSURE CORRECT POSITIONING BEFORE FINAL WELDING
 - REFERENCE DATA
NO OF PIECES PER TUBE KIT: 114 PCS
ESTIMATED WEIGHT OF TUBES: ? LBS
 - MATERIAL SPECIFICATIONS UNLESS OTHERWISE INDICATED
TUBING: 4130 CONDITION N MIL-T-6736B SEAMLESS AIRCRAFT

PRELIMINARY DRAWING

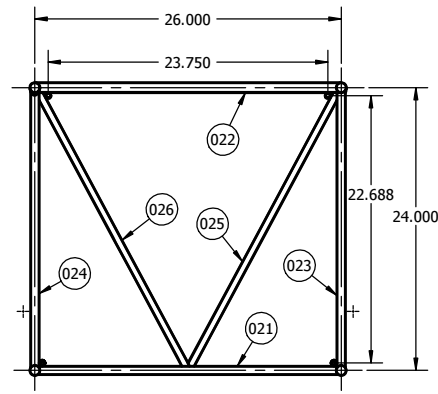
REV#	DATE	DRAWN	DESCRIPTION
VR3 ENGINEERING MECHANICAL ENGINEERING & CUSTOM MACHINE DESIGN STRAITFORD, ONTARIO, CANADA			
THIS DRAWING OR THE INFORMATION CONTAINED HEREIN MAY NOT BE REPRODUCED WITHOUT PERMISSION FROM VR3 ENGINEERING			
FUSELAGE WELDMENT: TUBE KIT ASSEMBLY			
MARQUART CHARGER MA-5			
ISOMETRIC VIEW			
DRAWN: JJ	DATE: MAY 2017	PROJECT NO. 714-06	DRAWING NO. 39179 sht1
D'SCALE: 1:6			REV NO. x



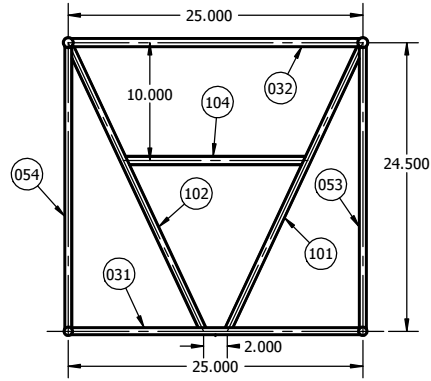
PRELIMINARY DRAWING



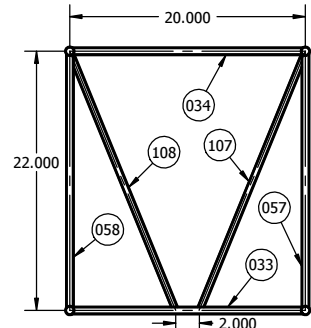
REV'N	DATE	DRAWN	DESCRIPTION
VR3 ENGINEERING MECHANICAL ENGINEERING & CUSTOM MACHINE DESIGN STRATFORD, ONTARIO, CANADA			
<small>THIS DRAWING OR THE INFORMATION CONTAINED HEREIN MAY NOT BE REPRODUCED WITHOUT PERMISSION FROM VR3 ENGINEERING</small>			
FUSELAGE WELDMENT: TUBE KIT ASSEMBLY			
MARQUART CHARGER MA-5			
FRONT, SIDE, TOP & BOTTOM VIEWS			
DRAWN: JJ	DATE: OCT 23 08	PROJECT NO. 714-06	DRAWING NO. 39179 sht2
D'SCALE: 8			REV NO. x



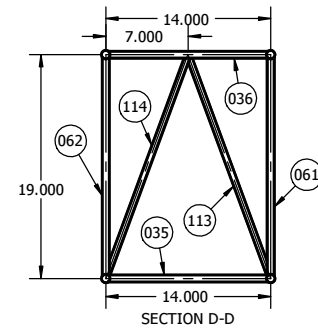
SECTION A-A



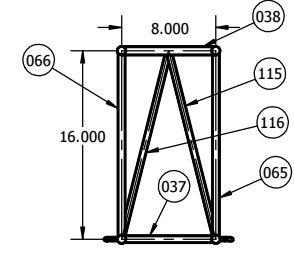
SECTION B-B



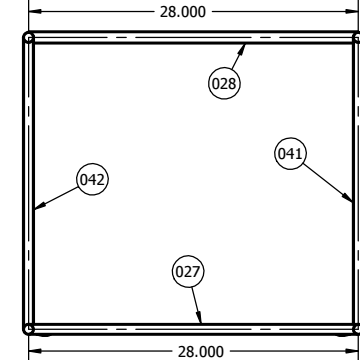
SECTION C-C



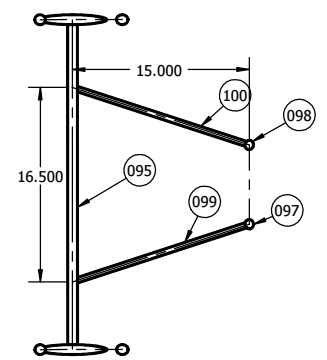
SECTION D-D



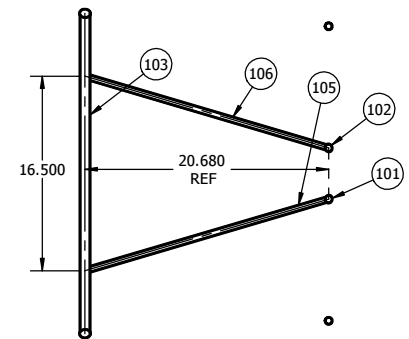
SECTION E-E



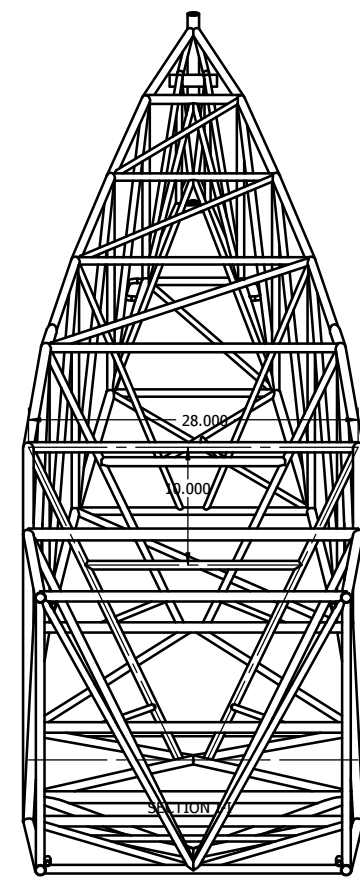
SECTION F-F



SECTION G-G



SECTION H-H



PRELIMINARY DRAWING

REV'N	DATE	DRAWN	DESCRIPTION
VR3 ENGINEERING MECHANICAL ENGINEERING & CUSTOM MACHINE DESIGN STRATFORD, ONTARIO, CANADA THIS DRAWING OR THE INFORMATION CONTAINED HEREIN MAY NOT BE REPRODUCED OR TRANSMITTED IN ANY FORM OR BY ANY MEANS, WITHOUT PERMISSION FROM VR3 ENGINEERING.			
FUSELAGE WELDMENT: TUBE KIT ASSEMBLY			
MARQUART CHARGER MA-5			
SECTION VIEWS			
DRAWN: JJ	DATE: OCT 24 08	PROJECT NO. 714-06	DRAWING NO. 39179 sht3
D'SCALE: 8			REV NO. x